

# Labuan Bajo 1 Day Phinisi Boat



# 1 Day Trip Luxury Phinisi Padar Island

Many travelers believe that a trip to Labuan Bajo isn't complete without reaching the summit of Padar Island. The view from the top is a must-see for every visitor. Climbing to the top involves a 20-30 minute trek, including 818 steps. Although the climb is challenging, the breathtaking panoramic view of three beaches from the hilltop makes it worthwhile. When going on the trek to Padar Island,

make sure to bring essentials such as water, a hat, sunscreen, comfortable footwear, sunglasses, and hiking poles for balance and stability.





# Komodo Island

Komodo Island is where you can find one of the 7 Wonders of the World. It's home to around 1300 Komodo dragons, the biggest lizards in the world. They're on top of the food chain, and can grow to be 2-3 meters long and weigh up to 90 kg. Visitors to the island can see these fascinating creatures up close with knowledgeable Rangers (Tour Guides). There are three trekking options to choose from: short, medium, and long. If you're lucky,

you might see both large and small Komodo dragons, as well as other wildlife on the island.





# Pink Beach

Pink Beach has rare pink sand, found at only seven beaches worldwide. In addition to stunning beach views, the underwater scenery is also remarkable, with various fish, coral reefs, and marine life. Activities such as diving, snorkeling, and sunbathing can be enjoyed here. Visitors can also relax, take in the beautiful panoramic beach views from a boat, and purchase snacks and souvenirs from local vendors.





# Labaho Phinisi 01

## Boat Spesification

- Name : White Pearl 02
- Size : 19,90 x 3,53 m
- Material : Ulin and Teakwood
- Capacity : 4 Person
- Built : 2019
- Speed : 10 Knot
- GT : 55
- Water : 2.000 Liter
- Electricity : 7.000 Watt
- Main Engine : Mitshubisi
- Power : 220 ps
- Fuel : Solar
- Navigation : GPS Garmin 585
- Safety Tools : 20 Life jacket, 4 Ring Buoy, 5 Fire extinguiser
- Boat Facilities : Main Cabin with bed measuring 160×200 cm, Second Cabin with 2 beds measuring 120×180 cm, Sitting room, Dining table, Drying place, Bathroom in each cabin, Life jacket, Snorkeling equipment, Towel, Deck on a ship & Sun Beds

## Includes :

- Pick up and Drop Service
- Welcome Drink
- Fresh Towels
- Snack (Fried Banana, etc)
- Mineral Water
- Fruits
- Coffe and Tea
- 1x Breakfast, 2x Lunch, and 1x Dinner during the trip (for 2D1N trip)
- Amenities : Shampoo and Showel Gel

## Excludes :

- Entrance Fee
- Documentation
- Tour Guide
- Soft Drink
- Personal Expense

Person	Rate
More than 4 person + \$50 / Person	\$1000



White Pearl 02



Mater Cabin



Second Cabin



Living Area



Other Facilities





# Labaho Phinisi 02

## Boat Spesification

- Name : Arimbi
- Year of Built : 2018
- Length : 25 Meter
- Width : 4.7 Meter
- Bedrooms : 4 Cabin, AC & Private Bathroom
- Main Engine : Mitsubishi 6D16
- Water : 5000 Liters Fresh Water
- Boat Facilities : Sun Deck, Indoor Dining, Outdoor Dining, Skoci

Packages	Rate
Up to 15 Person	\$1800

## Includes :

- Pick up and Drop Service
- Welcome Drink
- Fresh Towels
- Snack (Fried Banana, etc)
- Mineral Water
- Fruits
- Coffe and Tea
- 1x Breakfast, 2x Lunch, and 1x Dinner during the trip (for 2D1N trip)
- Amenities : Shampoo and Showel Gel

## Excludes :

- Entrance Fee
- Documentation
- Tour Guide
- Soft Drink
- Personal Expense



Arimbi



Cabin 1

## Other Facilities



Cabin 1



Cabin 2



Cabin 3





# Labaho Phinisi 03

## Boat Spesification

- Name : Sentral
- Year of Built : 2023
- Length : 20 Meter
- Width : 3.8 Meter
- Bedrooms : 2 Cabin, Master Room: AC & Private Bathroom
- Main Engine : Yanmar 3 Cylinder + TF 300
- Water : 3000 Liters Fresh Water
- Boat Facilities : Sun Deck, Outdoor Dining, Skoci

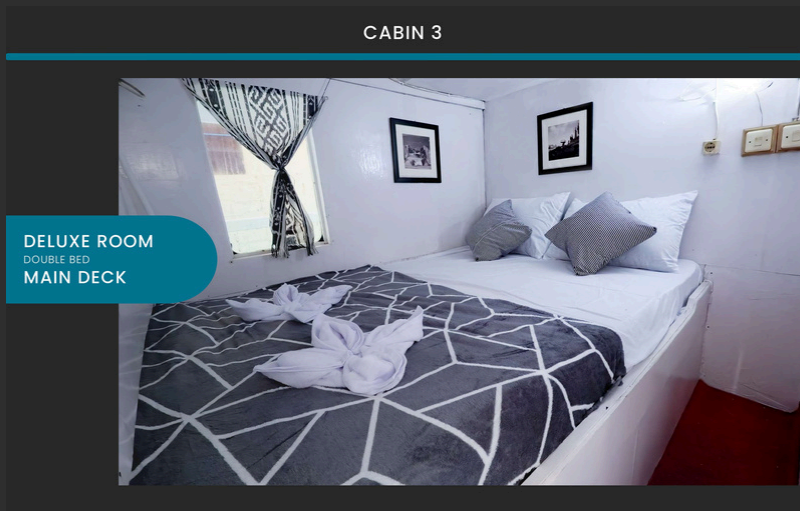
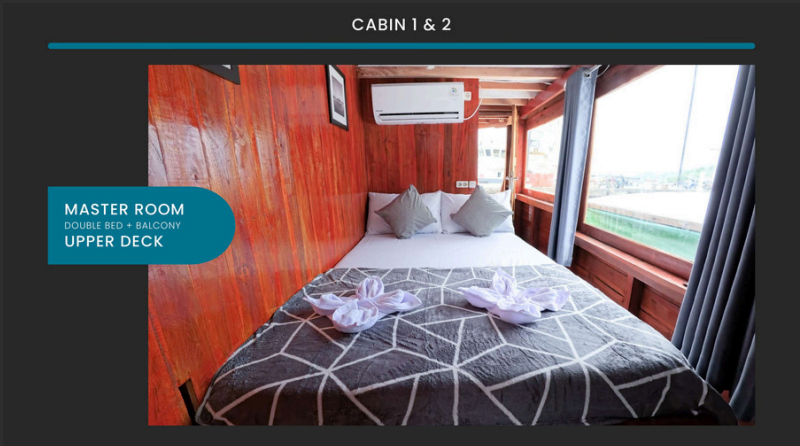
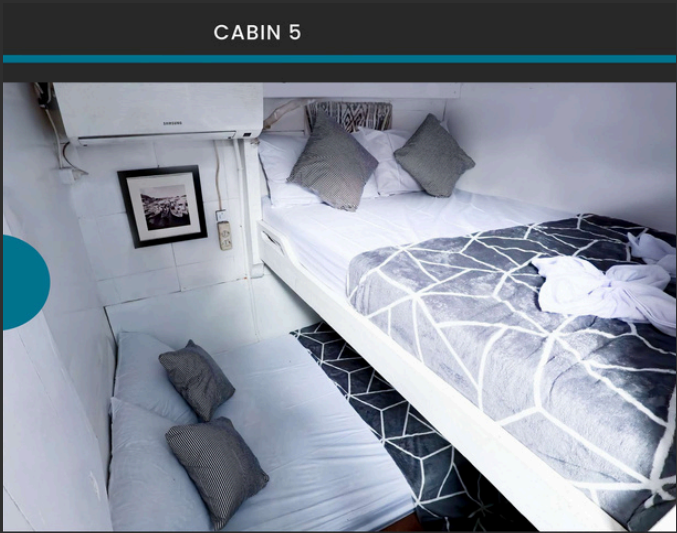
Packages	Rate
1 - 4 Person	\$1300
5 - 8 Person	\$1466
9 - 12 Person	\$1533

## Includes :

- Pick up and Drop Service
- Welcome Drink
- Fresh Towels
- Snack (Fried Banana, etc)
- Mineral Water
- Fruits
- Coffe and Tea
- 1x Breakfast, 2x Lunch, and 1x Dinner during the trip (for 2D1N trip)
- Amenities : Shampoo and Showel Gel

## Excludes :

- Entrance Fee
- Documentation
- Tour Guide
- Soft Drink
- Personal Expense





# Labaho Phinisi 04

## Boat Spesification

- Name : Gajah Putih
- Cabins : 2 Master Cabin, 2 Deluxe Cabin & 2 Superior Cabin
- Main Engine : Mitsubishi 6D22
- Secondary Engine : Mitsubishi 4 Cylinders
- Main Power : ADK 40 KVA Supply
- Secondary Power : Genset Motoyama MPG 12000 Supply
- Boat Facilities : Sun Deck, Dive Deck, Paddle Board, AC, Wifi & Lounge

Packages	Rate
1 - 8 Person	\$2166
9 - 12 Person	\$2366
13 - 14 Person	\$2500

## Includes :

- Pick up and Drop Service
- Welcome Drink
- Fresh Towels
- Snack (Fried Banana, etc)
- Mineral Water
- Fruits
- Coffe and Tea
- 1x Breakfast, 2x Lunch, and 1x Dinner during the trip (for 2D1N trip)
- Amenities : Shampoo and Showel Gel

## Excludes :

- Entrance Fee
- Documentation
- Tour Guide
- Soft Drink
- Personal Expense



Other Facilities





# Labaho Phinisi 05

## Boat Spesification

- Name : Anthias
- Dimensions : Length 23 m, Beam 4 m
- Length of draft : 2,00 m
- Engine : Mitsubishi 6D16
- Speed : 7-10 Knot
- Fresh water : 4000 Liter
- Cabins : Upper Cabin (Suite Cabin 1 King Size bed + Sofa Bed, Balcony & Private bath) and Lower Cabin (Cabin (1) Queen Size Bed, Cabin (2) Single Size (Twin) Bed & Share bath)
- Boat Facilities : Sun Deck with Loungers, Storage space, Lockable Safety Box, AC, Indoor Dining

Packages	Rate
1 - 8 Person	\$2166
9 - 12 Person	\$2366
13 - 14 Person	\$2500

## Includes :

- Pick up and Drop Service
- Welcome Drink
- Fresh Towels
- Snack (Fried Banana, etc)
- Mineral Water
- Fruits
- Coffe and Tea
- 1x Breakfast, 2x Lunch, and 1x Dinner during the trip (for 2D1N trip)
- Amenities : Shampoo and Showel Gel

## Excludes :

- Entrance Fee
- Documentation
- Tour Guide
- Soft Drink
- Personal Expense



Other Facilities





# Labaho Phinisi 06 (Luxury)

## Boat Spesification

- Name : Thalassa 2
- Length : 35 m
- Width : 7.2 m
- Engine : Nissan 340 HP
- Speed : 8-10 Knot
- Fresh water : 8 Tons
- Cabins : Cabin 1: Twin Bed ( Private ) Cabin 2 : Twin Bed ( Private ) Cabin 3 : Double Twin Bed ( Sharing 4 ) Cabin 4 : Doubel King Bed ( Saring 4 ) Cabin 5 : Twin Bed ( Private ) Cabin 6 : Twin Bed ( private ) Cabin 7 : Double Bunk Bed ( Sharing 4 ) Cabin 8 : Double Bunk Bed ( Sharing 4 ) Cabin 9 : King Bed + Single Bed ( Master Cabin )
- Boat Facilities : Cabin with AC, Karaoke Enterteinment, Snorkeling equipment & Paddle Board, Dining Area, Sun Deck, Toilet

## Includes :

- Pick up and Drop Service
- Welcome Drink
- Fresh Towels
- Snack (Fried Banana, etc)
- Mineral Water
- Fruits
- Coffe and Tea
- 1x Breakfast, 2x Lunch, and 1x Dinner during the trip (for 2D1N trip)
- Amenities : Shampoo and Showel Gel

## Excludes :

- Entrance Fee
- Documentation
- Tour Guide
- Soft Drink
- Personal Expense

Packages	Rate
12 - 16 Person	\$4452
17 - 19 Person	\$4699
20 - 27 Person	\$4946



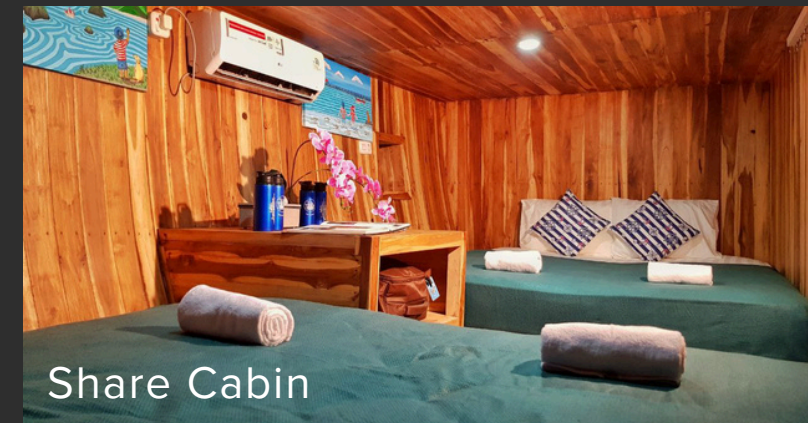
Thalassa 2



Master Cabin



Private Cabin



Share Cabin



Share Cabin



Other Facilities





# Labaho Phinisi 07 (Luxury)

## Boat Spesification

- Name : Leticia (Luxury)
- Year of Built : 2021
- Length : 29 Meter
- Beam : 7.6 Meter
- Draft : 3 Meter
- Hull Structure : Kalimantan Ulin Wood
- Cabins : 2 Master Cabin - 4 Deluxe Cabin - 4 Superior Cabin All Ensuite Bathroom - Max. 24 Capacity
- Main Engine : Mitsubishi 8N20 8 Cylinder
- Aux Engine : 2X Mitsubishi 4D10 & 40KVA
- Cruising Speed : Electric Generator 7-11 Knots
- Safety : Lifteraft 15 person (X2), Lifebuoy, Life Jacket
- Navigation & Communication : Garmin AIS 800, Icom Communication Radio, Walkie Talkie
- Boat Facilities : Paddle Board, Floating Pool, Seabob Water, Scooter Bean Bag & Lazy Chair LCD Projector Karaoke Set, Minibar & Sundeck

## Includes :

- Pick up and Drop Service
- Welcome Drink
- Fresh Towels
- Snack (Fried Banana, etc)
- Mineral Water
- Fruits
- Coffe and Tea
- 1x Breakfast, 2x Lunch, and 1x Dinner during the trip (for 2D1N trip)
- Amenities : Shampoo and Showel Gel

## Excludes :

- Entrance Fee
- Documentation
- Tour Guide
- Soft Drink
- Personal Expense

Person	Rate
More than 4 person + \$166 / Person	\$3333



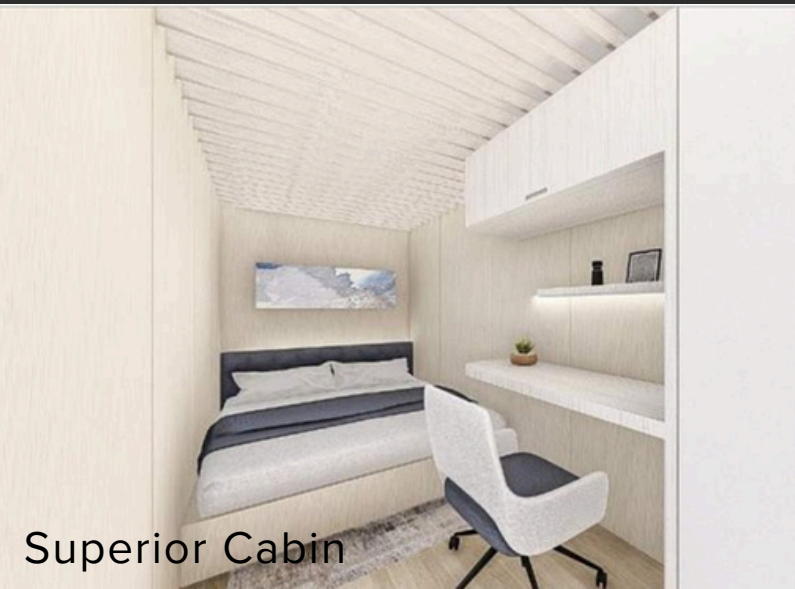
Leticia (Luxury)



Master Cabin



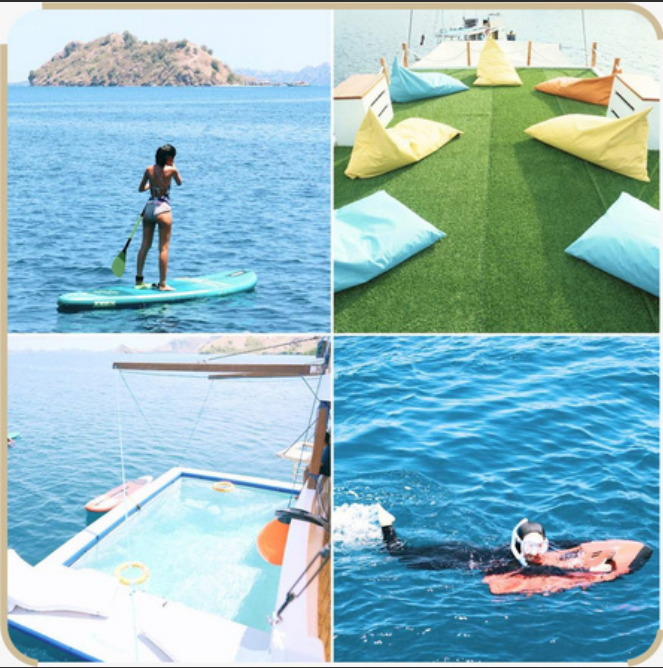
Deluxe Cabin



Superior Cabin



Other Facilities





# Labaho Phinisi 08 (Luxury)

## Boat Spesification

- Name : Mosalaki (Luxury)
- Year of Built : 2023
- Length : 28 Meter
- Width : 7 Meter
- Depth : 3 Meter
- Material : Iron Wood
- Bedrooms : Executive Bedroom - 3 Deluxe Bedroom - Superior Bedroom All Ensuite Bathroom
- Main Engine : Mitsubishi
- Speed : Max. up to 13 Knot
- Safety : Liferaft 25 person, Life Vest, Fire Extinguisher, First Aid Kit
- Navigation & Communication : GPS Garmin, Radar, Sonar, AIS, Radio VHF, Wifi & Satelite Phone
- Boat Facilities : Karaoke, Coffee Machine, Tender Boat (6m 90Hp four stroke), Fridge, Bean Bag, TV, Bluetooth Sound System, Bar, Stand up Padle & Water Scooter

## Includes :

- Pick up and Drop Service
- Welcome Drink
- Fresh Towels
- Snack (Fried Banana, etc)
- Mineral Water
- Fruits
- Coffe and Tea
- 1x Breakfast, 2x Lunch, and 1x Dinner during the trip (for 2D1N trip)
- Amenities : Shampoo and Showel Gel

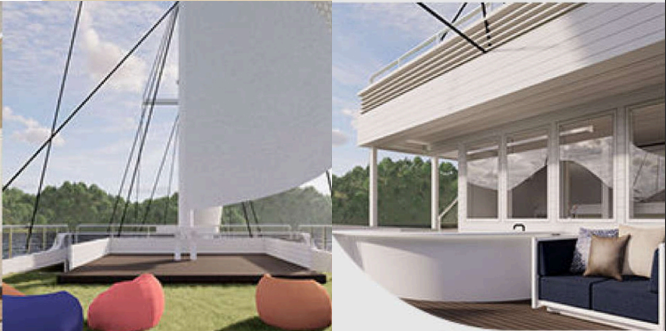
## Excludes :

- Entrance Fee
- Documentation
- Tour Guide
- Soft Drink
- Personal Expense

Person	Rate
More than 5 person + \$66 / Person	\$3333



Other Facilities





# Labaho Phinisi 09 (Luxury)

## Boat Spesification

- Name : Sea Familia (Luxury)
- Year of Built : 2019
- Length : 25 Meters
- Width : 5.3 Meters
- Depth : 2.1 Meters
- Material : Ulin & Teak Wood
- Cabins : 4 Manta Cabins & 2 Turtle Cabins
- Main Engine : Mitsubishi 6D16
- Dinghy : 1 Tender with Yamaha Endure 40 hp
- Speed : 6-9 Knots
- Safety : 25 Life Jackets, 4 Ring Buoy, 1 Life Raft Capacity 25 person, Smoke Signal & Flare Gun
- Navigation & Communication : GPS Garmin Map585 Marine, Com Radio Marine
- Boat Facilities : Karaoke, Dining Area, Jacuzzi, Sun Deck, Bean Bag, Sound System

## Includes :

- Pick up and Drop Service
- Welcome Drink
- Fresh Towels
- Snack (Fried Banana, etc)
- Mineral Water
- Fruits
- Coffe and Tea
- 1x Breakfast, 2x Lunch, and 1x Dinner during the trip (for 2D1N trip)
- Amenities : Shampoo and Showel Gel

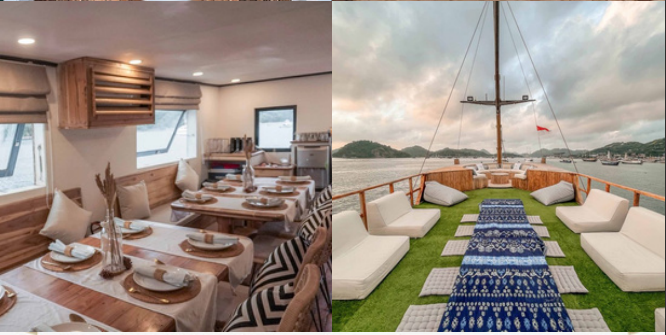
## Excludes :

- Entrance Fee
- Documentation
- Tour Guide
- Soft Drink
- Personal Expense

Person	Rate
More than 8 person + \$333 / Person	\$3000



Other Facilities





# TERM & CONDITION

## Reservations and Payments

- Rates quoted are inclusive of tax and service charge
- Rates quoted are nett non-commissionable
- All inquiry sent to email address reservation and to be confirmed by our staff reservation Labaho via email or whatsapp.
- Required for deposit 50% of total booking reservation must be received by our staff accounting Labaho at least 30 days before arrival and booking reservation are secured it
- Full payment for balance payment must be received at least 7 (seven) days before guests arrival.
- For last minutes booking required full payment before guest arrival or on aboard in our boats

## Change of Booking

If there are any changes of bookings must be made in writing to reservation email : **info@florestoday.com** and will apply an administration fee of Rp 1,000,000,- for any change of booking after confirmation has been issued.

Acceptance of any change is subject to availability and approval by Labaho.

## Cancellation and Refund

- Any cancellation must be in written by email with subject to approval of Labaho
- Any cancellation made within 14 days prior to guest arrival will be forfeiting 50% refund as cancellation penalty and process refund will take 30days
- Any cancellation made within 7days prior to guest arrival will be forfeiting 80% refund as cancellation penalty and process refund will take 30days
- Any cancellation made within 3days prior to guest arrival or in case no show, a full charge will be applied ( NON REFUNDABLE )
- Full refund only allowed in the event of force majeure or condition that do not allow to travel with a letter from hospital that describe the condition





# How to Reach Labuan Bajo?

## Flights to Labuan Bajo

There are several ways to reach Labuan Bajo, primarily by flight. Here is the information on direct flights to Labuan Bajo:

- From Jakarta: There are direct flights from Jakarta to Labuan Bajo, which take approximately 2 hours and 30 minutes.
- From Bali: There are direct flights from Bali to Labuan Bajo, which take approximately 1 hour and 15 minutes.

## Transportation from the Airport to Hotel or Boat

Upon arrival at Komodo Airport, Labuan Bajo, guests will be picked up and taken to their hotel or boat. This pick-up and drop-off service is included in the travel package, ensuring that guests can enjoy their journey comfortably without worrying about additional transportation.







## PT. FLORES TODAY INDONESIA

### About Us

Labaho is a tour and travel business brand owned by PT Flores Today Indonesia. The company was established on February 24, 2016, with its headquarters in Labuan Bajo and branch offices in Bali. Labaho specializes in providing tour services using phinisi boats and speed boats in Labuan Bajo, offering a unique and memorable travel experience for customers who want to explore the tourist destinations in that area. With a quality fleet of boats, Labaho offers various tour packages that combine the beauty of nature, marine biodiversity, and local culture, providing an unforgettable adventure for tourists.



Labuan Bajo Office



Bali Office

### Contact us



+62 8129 1111 137



info@florestoday.com



www.labaho.com



@labahoofficial



**RUDI SEMBIRING  
MELIALA**  
CEO / FOUNDER



**PRIMA UTAMA  
BRAHMANA**  
GENERAL MANAGER



**KRISTOFORUS  
LANDE**  
OPERATIONAL



**AGUSTINA  
NURTIANA LEDI**  
MARKETING & RESERVATION

### Office



Jl. Gabriel Gampur, No.08, Komplek  
Flopterti, Labuan Bajo, NTT - Indonesia



Jl.Raya Kerobokan No.71B, Kerobokan  
Kelod, Kuta Utara, Bali - Indonesia